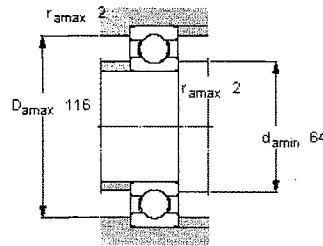
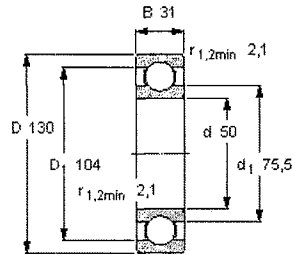


14.3.1

SKF

Deep groove ball bearings, single row, unsealed

Principal dimensions			Basic load ratings		Fatigue load limit P_u	Speed ratings		Mass	Designation
d	D	B	dynamic	static		Reference speed	Limiting speed		
mm			C	C_0	kN	r/min		kg	-
50	130	31	87,1	52	2,2	12000	7500	1,90	6410



Calculation factors

k_r 0,035
 f_0 12

Legga i Rølla 1 og Rølla 2

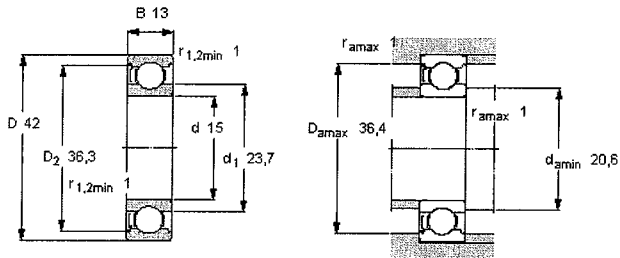
3D view PDF CAD IMP Print Close

Deep groove ball bearings, single row, shield on one side

Product information

Tolerances, see also text
 Radial internal clearance, see also text
 Recommended fits
 Shaft and housing tolerances

Principal dimensions			Basic load ratings		Fatigue load limit P_u	Speed ratings		Mass	Designation
d	D	B	dynamic	static		Reference speed	Limiting speed		
mm			kN		kN	r/min		kg	-
15	42	13	11,9	5,4	0,228	38000	24000	0,082	6302-Z



Calculation factors

k_r 0,03
 f_0 12

Lager fyrir hlíðar kraft
 Lager fyrir stöðning 1

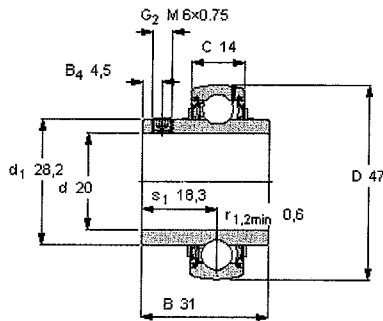
14,3.3

3D view PDF CAD IMP Print Close

Y-bearings, with grub screws, YAR 2-2F
Product information

Tolerances
Radial internal clearance
Shaft tolerances, see text

Principal dimensions				Basic load ratings		Fatigue load limit P_u	Limiting speed with shaft tolerance h6	Mass	Designation
d	D	B	C	dynamic	static				
mm				kN		kN	r/min	kg	-
20	47	31	14	12,7	6,55	0,28	8500	0,14	YAR 204-2F



Hexagonal key size [mm]
3

Rec. tightening torque [Nm]
4

Appropriate rubber seating ring
RIS 204

Calculation factor
 f_0 13

Lega i Rulla 3

14.3.4

SKF

Deep groove ball bearings, single row, unsealed

Product information

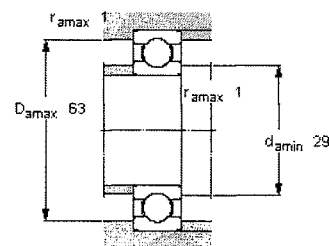
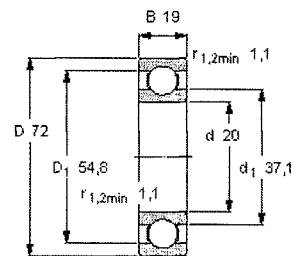
Tolerances , see also text

Radial internal clearance , see also text

Recommended fits

Shaft and housing tolerances

Principal dimensions			Basic load ratings		Fatigue load limit P_u	Speed ratings		Mass	Designation
d	D	B	dynamic	static		Reference speed	Limiting speed		
mm			C	C_0	kN	r/min		kg	-
20	72	19	30,7	15	0,64	24000	15000	0,40	6404



Calculation factors

k_r 0,035

f_0 11

Legya i Rulla 4

14.3.5



SKF Maintenance and Lubrication Products

Mounting • Alignment • Lubrication • Condition Monitoring • Dismounting

LGGB 2

SKF green biodegradable bearing grease

LGGB 2 is biodegradable, low toxicity, synthetic ester oil based grease using a lithium-calcium thickener. It has excellent lubrication properties for a wide range of applications operating under different conditions.



- Compliance with current regulations on toxicity and biodegradability
- Good performance in applications with steel-on-steel spherical plain bearings, ball bearings and roller bearings
- Good low temperature start-up performance
- Good corrosion inhibiting properties
- Suitable for medium to high loads

Typical applications



- Agricultural and forestry equipment
- Construction and earthmoving equipment
- Mining and conveying equipment
- Water treatment and irrigation
- Locks, dams, bridges
- Linkages, rod ends
- Other applications where contamination of the environment is a concern

Bearing operating conditions	
Temperature	Low to medium
Speed	Low to medium
Load	Medium to high
Vertical shaft	o
Fast outer ring rotation	-
Oscillating movements	+
Severe vibration	+
Shock load or frequent start up	+
Low noise	-
Low friction	o
Rust inhibiting properties	o
+ = Recommended o = Suitable - = Not suitable	

Available pack sizes				
SYSTEM 24	420 ml cartridge	5 kg can	18 kg can	180 kg drum

Technical data	
DIN 51825 code	KPE 2K-40
NLGI consistency class	2
Soap type	Lithium /calcium
Colour	Off white
Base oil type	Synthetic
Operating temperature range, °C (°F)	-40 to 120 (-40 to 250)
Dropping point DIN ISO 2176, °C (°F)	>170 (>338)
Base oil viscosity:	
40 °C, mm ² /s	110
100 °C, mm ² /s	13
Penetration DIN ISO 2137:	

60 strokes, 10-1 mm	265 - 295
100 000 strokes, 10-1 mm	+50 max. (325 max.)
Mechanical stability:	
Roll stability, 50 hrs at 80 °C, 10-1 mm	+70 max. (350 max.)
Roll stability, 72 hrs at 100 °C, 10-1 mm	-
SKF V2F test	-
Corrosion protection:	
SKF Emcor - standard ISO 11007	0 - 0
- water washout test	-
- salt water test (100% seawater)	-
Water resistance	
DIN 51 807/1, 3 hrs at 90 °C	0 max.
Oil separation	
DIN 51 817, 7 days at 40 °C, static, %	0,8 - 3
Lubrication ability	
SKF R2F, running test B	Pass at 100 °C* (212 °F)
Copper corrosion	
DIN 51 811, 100 °C	-
Rolling bearing grease life	
SKF R0F test L50 life at 10 000 rpm, hrs	> 300 at 120 °C (250 °F)
EP performance	
Wear scar DIN 51350/5, 1 400 N, mm	1,8 max.
4-ball test, welding load DIN 51350/4	2 600 min.
Fretting corrosion	
ASTM D4170 (mg)	
Designation	LGGB 2/(pack size)
* Typical value	

More information	
Publication 	Safety data sheet 

[Print this page](#)

SKF Maintenance and Lubrication Products
 • [Click here to go to the catalogue main menu](#) •

[Mounting](#) [Alignment](#) [Lubrication](#) [Condition Monitoring](#) [Dismounting](#)